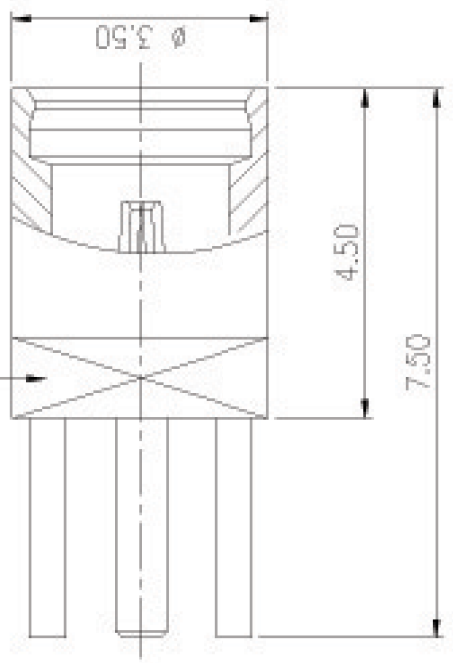
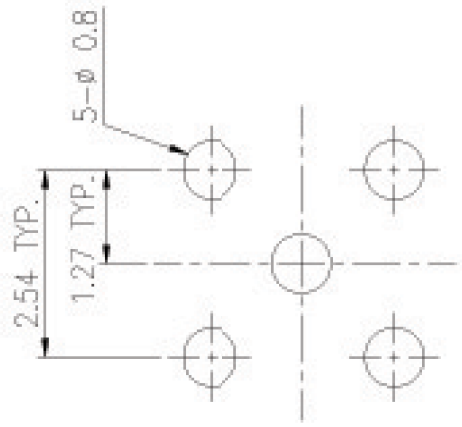
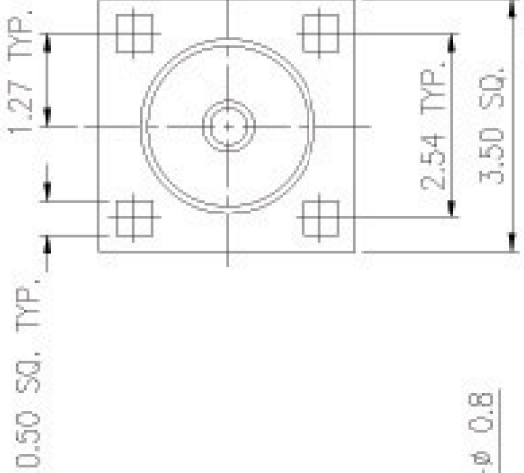


1



SCALE 3:1

3	1/100	COVER	SEE PART'S DWG.	SEE PART'S DWG.
2	1/100	TRAY	SEE PART'S DWG.	SEE PART'S DWG.
1	1	INSULATOR	TEFLON	NONE
1	1	CONTACT	BERYLLIUM COPPER	GOLD PLATED
1	1	BODY	BRASS	GOLD PLATED
NO.	QTY	DESCRIPTION	PART'S NO.	
			S25-00200	

GENERAL TOLERANCES		MATERIAL :	SEE TABLE
DIM: X \pm 0.25(0.01)		FINISH :	SEE TABLE
ANGULAR: \pm 3		DRAWN BY:	MARY HULL
DIMENSION CLASSIFICATION		CHK'D BY:	
■ CRITICAL □ MAJOR		APP'D BY:	
REVISION RECORD		SHEET 1 OF 1	UNIT : mm
LTR	REVISION RECORD	ECN	7
DR	CHK	DATE	
TITLE:		MMCX ST. JACK FOR P.C.B. MOUNT	
DWG. NO.:		25-00200-1	
REV		A	

DO NOT SCALE DRAWING

Technical Data :

Material / Finish :

	Material	Finish
Connector body	Brass per (QQ-B-626 or JIS-C3604B)	Gold plating
Center contact female	Beryllium copper per (QQ-C-530 or JIS-C1730)	Gold plating
Insulator	PTFE	None

Electrical :

Nominal impedance	50 Ω
Frequency up to	6 GHz
VSWR	<1.5
Insertion loss	<0.6 dB
Working voltage	125 Volts rms.
Dielectric withstanding voltage	500 Volts rms.
Insulation resistance	500 M Ω min.
Contact resistance	center conductor 5.0 m Ω
	outer conductor 2.5 m Ω

Mechanical & Environmental :

Mating	Snap on coupling
Engage force	\leq 20 N
Disengage force	5 to 20 N
Durability	\geq 500 cycles
Temperature range	-65 $^{\circ}$ C to +165 $^{\circ}$ C
Vibration	Per MIL-STD-202 Method 204 Test Condition D
Corrosion	Per MIL-STD-202 Method 101 Test Condition B